

# Software and GUI for a gamma camera for intra-operative functional imaging

Supervisor: Philipp Matthies

# Gamma Camera - calibration pics

setup

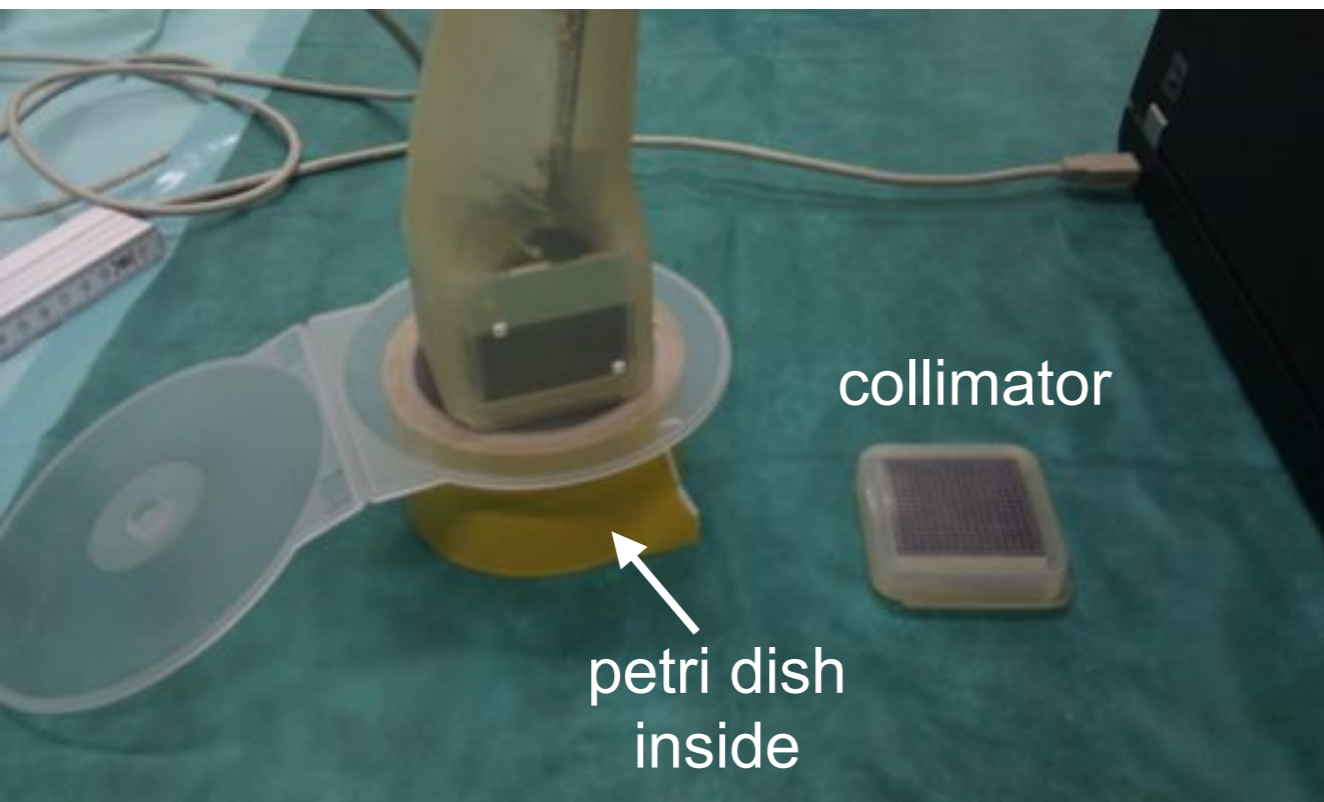


petri dish with NaCl + <sup>99m</sup>Tc

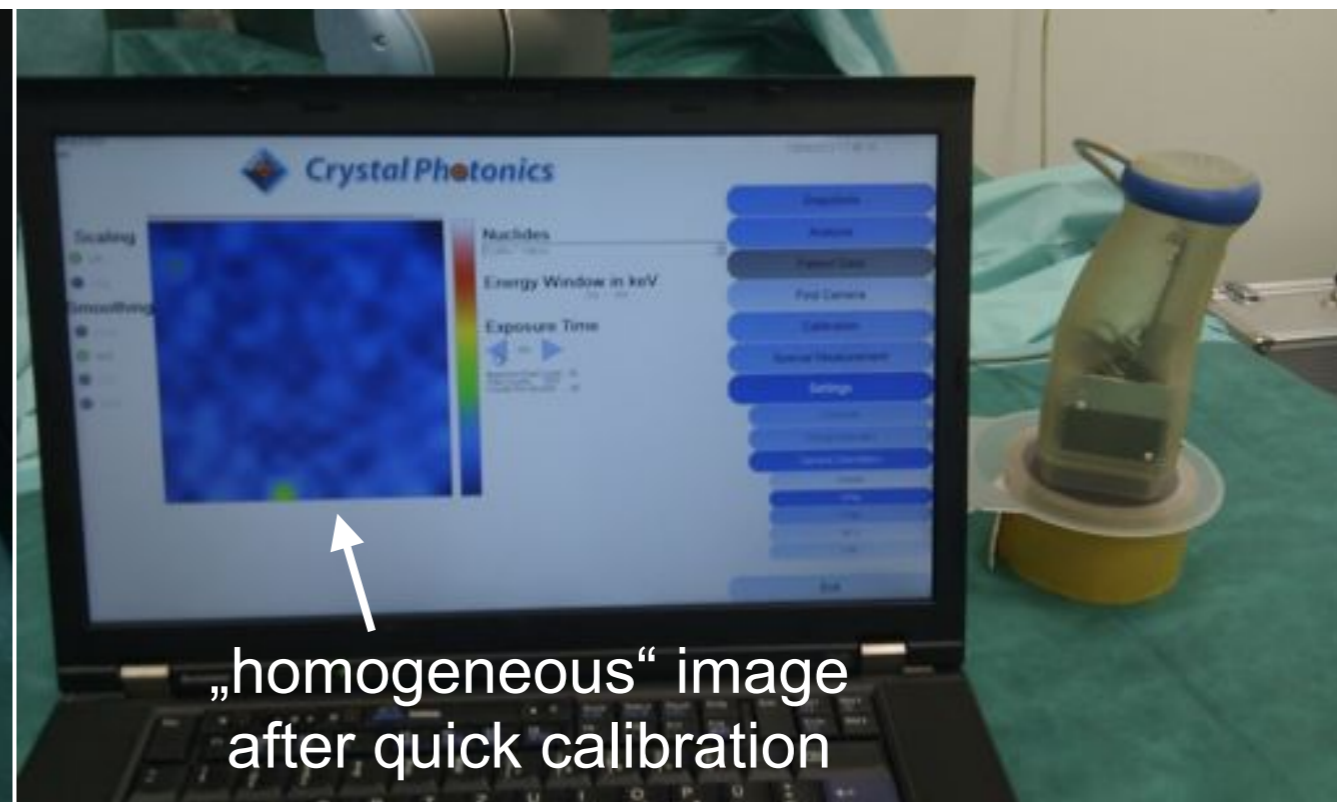


collimator

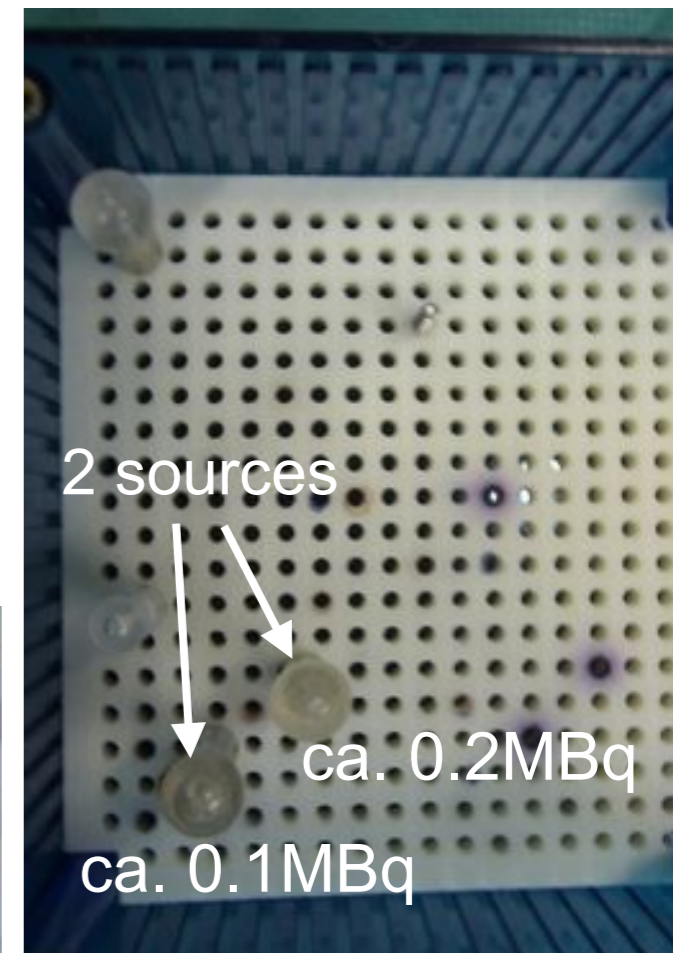
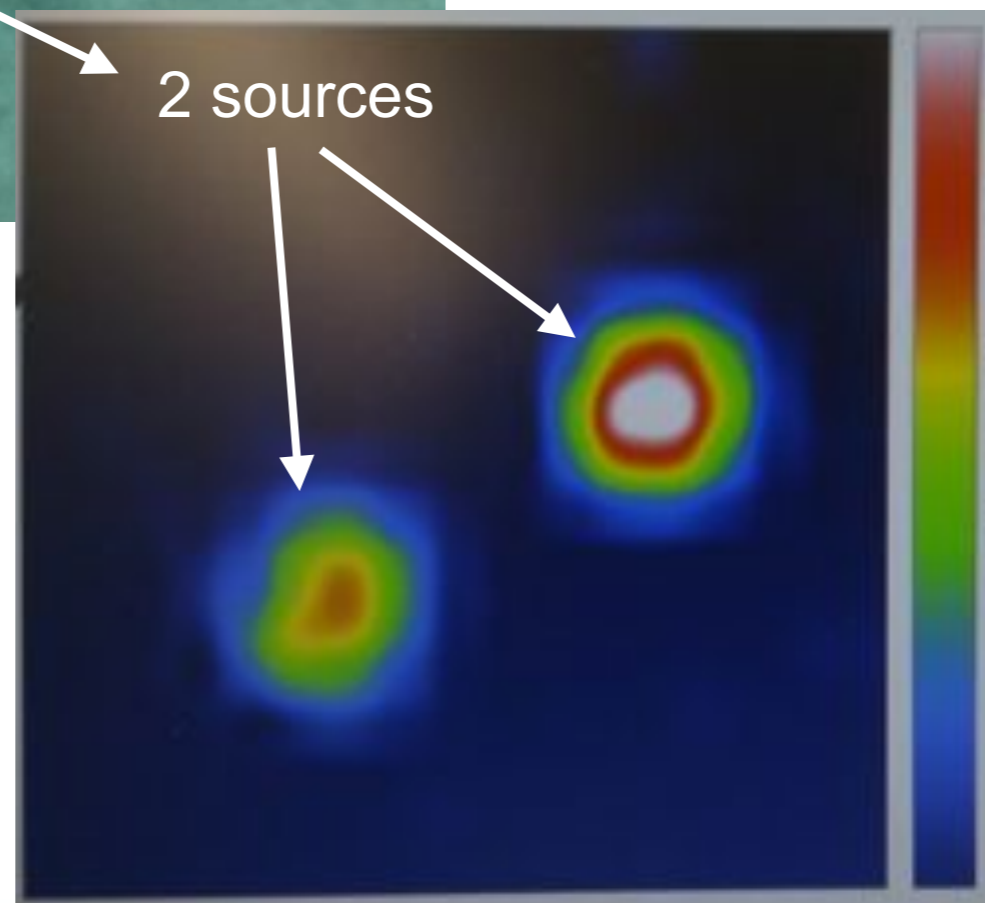
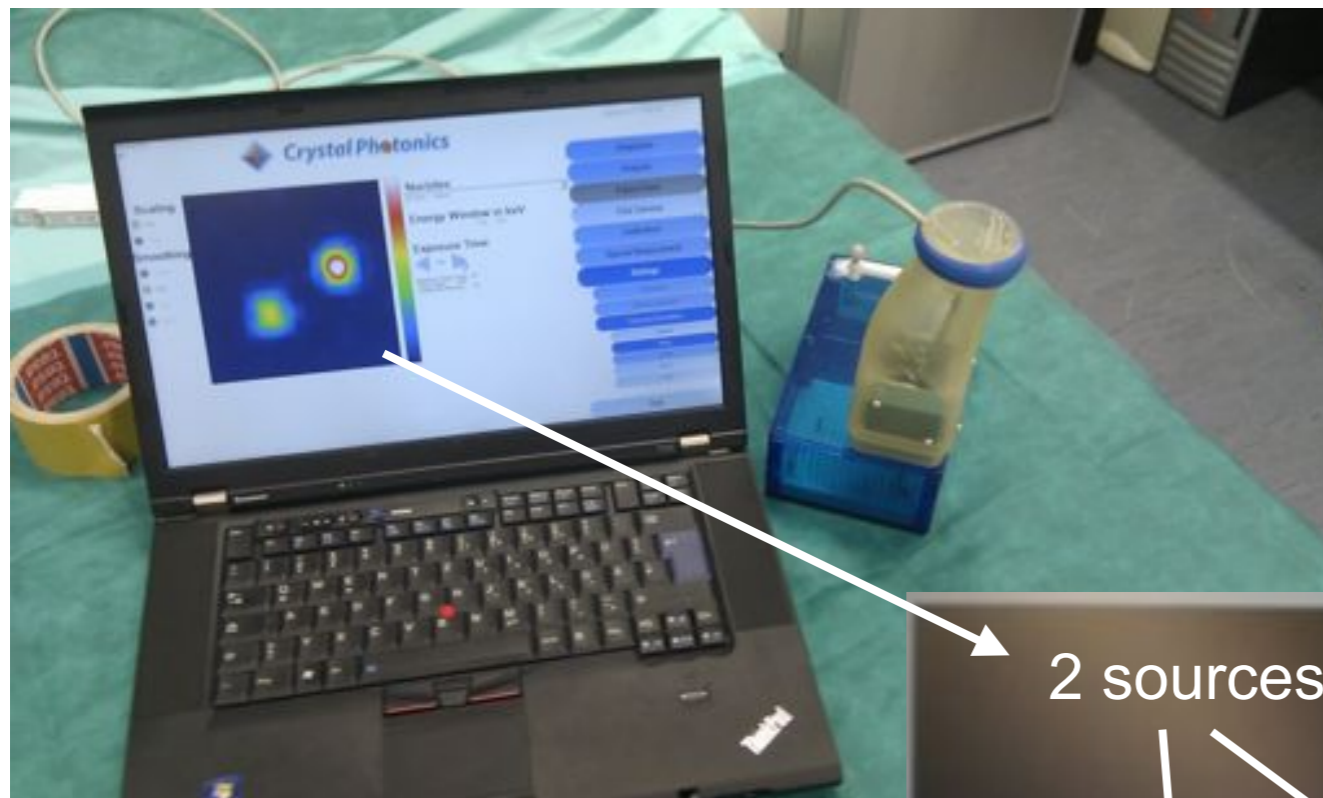
petri dish inside



„homogeneous“ image after quick calibration



# Gamma Camera - test measurement



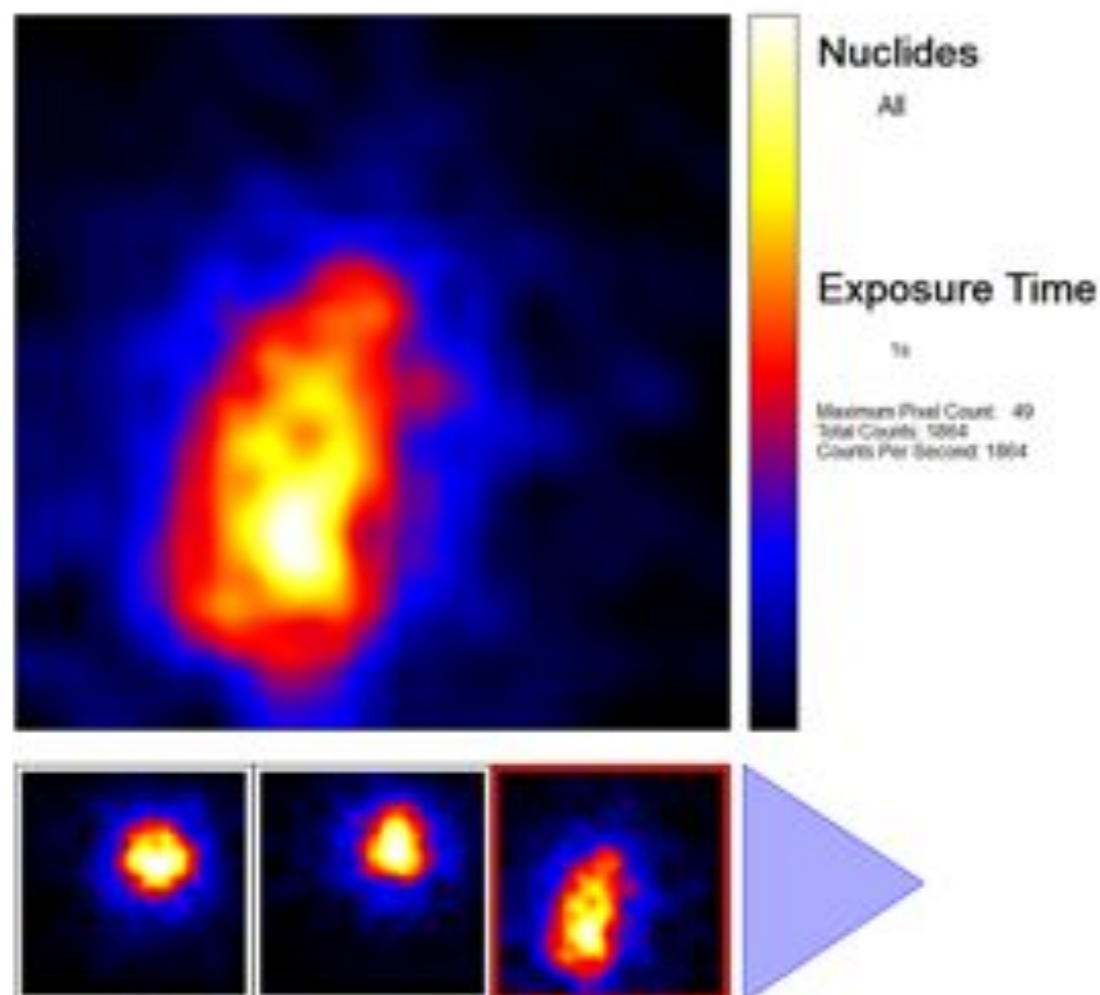
## To Do's:



09/11/2011 16:25:35

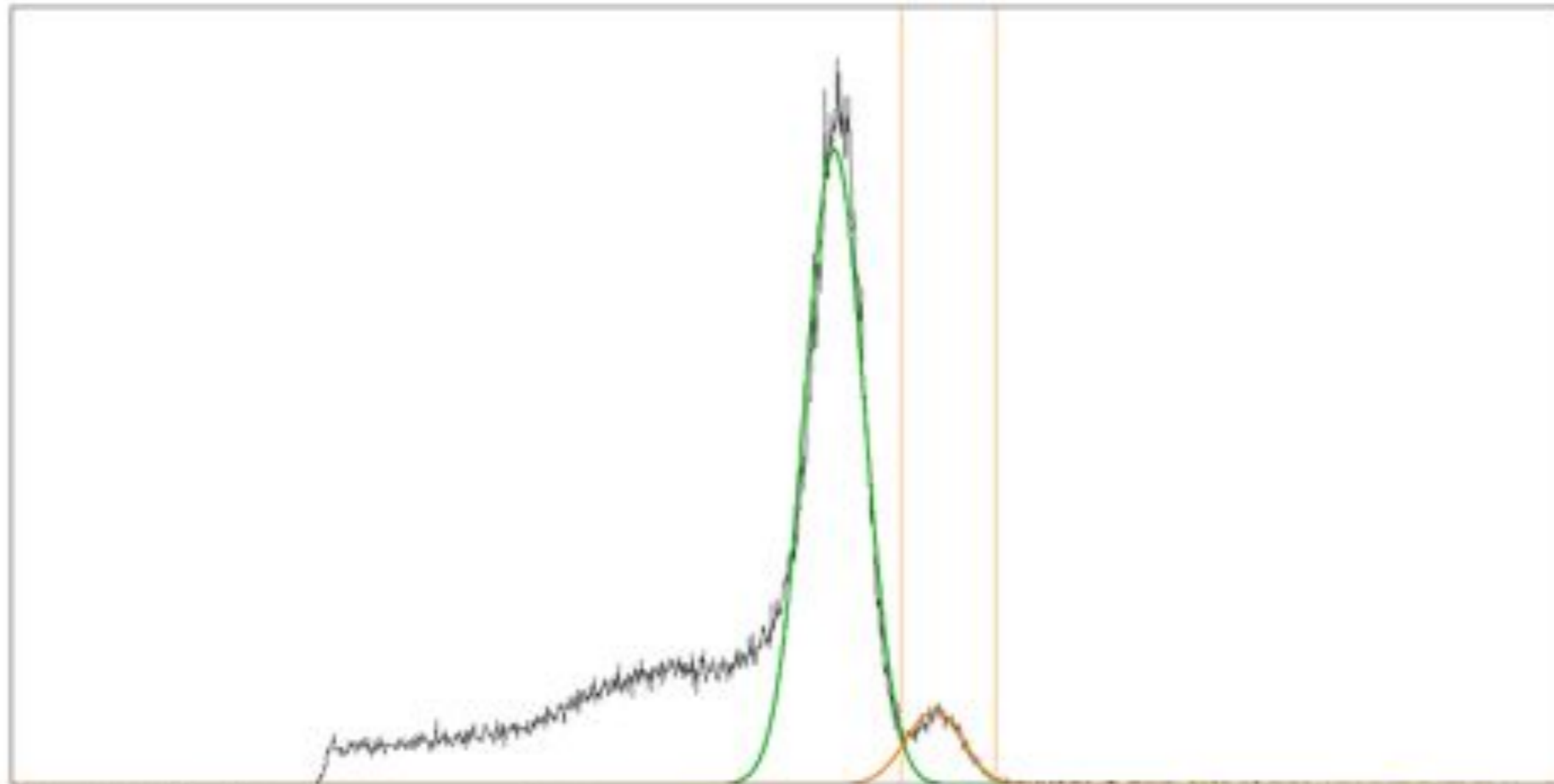
- Snapshots
  - Take Snapshot
  - Save Snapshot
  - Print Snapshot
  - Delete Snapshot
- Analyze
- Patient Data
- Find Camera
- Calibrate
- Special Measure
- Settings
  
- Exit

- Read out camera using C++ API
- Develop a Qt interface for camera control
- implement similar functionality as current proprietary software
  - calibration
  - homogeneity
  - measurements
- optional: implement platform-independent solution



# Example spectrum:

energy



channels

Navigation and control interface for the spectrum plot:

- Buttons for "Rows" and "Columns" with left and right arrows.
- Buttons for "Erase" and "AUTO" with left and right arrows.
- Buttons for "Show Text", "Connect Points", "Show X-Scale", and "Show Y-Scale".
- Buttons for "Show Peak", "Show Gauss", and "Show MGauss".
- A "Back" button.

## Working environment:



- IFL: Interdisziplinäres Forschungslabor @ Klinikum Rechts der Isar



**Thanks for your attention!**  
**Questions?**

If you are interested contact me:  
[matthies@in.tum.de](mailto:matthies@in.tum.de)